

COREtec®

the Original

the
essentials
collection

EN

SK - PL - RU - HU - CZ - LT



FROM ONE TRUE ORIGINAL TO ANOTHER, IT'S A FAMILY AFFAIR!

What's in your *core*?

The real values in life are those created and found within families; authenticity, trust and the opportunity given to be creative and express yourself. These same values drive our company and they define our corporate culture.

We saw an opportunity to create a better floor. We chased a dream and created a whole new category along the way. As the innovators of COREtec®, the Original, 100% waterproof floor, we did just that. Stylish, strong floors that sustain real family lives full of entertaining, kids and pets.

Click, lock, enjoy. It is as simple as that!

It all began as an entrepreneurial business in 2001, within our founder's heart and spare bedroom as our "headquarters". With the invention of COREtec®, the original, patented, 100% waterproof floor in 2013, we grew rapidly to become the leading brand of these unique and highly innovative products.

We launched our European division in 2016 and that same year were acquired and embraced into the family of Shaw Floors, an industry leader and subsidiary of Berkshire Hathaway, led by the world-renowned investor, Warren Buffett.

We've come a long way from where we started to where we are now. But those family values guide us still. Led by management and embraced by every employee, dealer, and partner, we are recognized as the problem-solvers, innovators and design enthusiasts. Today we offer an incredible range of resilient, durable floors that can be purchased, installed and lived upon in one single day. Click, lock, enjoy. It is as simple as that!

The most difficult task will be to choose from our wide variety of life-like decors. But don't worry, you are sure to find one to match your style because we have a floor for every personality.

**WELCOME TO OUR FAMILY,
WE PROMISE TO REMAIN AUTHENTIC TO THE CORE**

Your COREtec® floor

Always fits your style & stands up to real life, it's engineered for simplicity.



Always fits your style

We have a passion for providing a wide selection of authentic natural looks, so you can express what makes you, you. Persistent in product innovation – including micro-beveled edges, enhanced painted bevels & Embossed in Register technology – we create the most appealing designs & textures available.



Stands up to real life

Our floors are 100% waterproof, kid proof & pet proof. Try them in your kitchen or bathroom: they won't warp or buckle, even if submerged in water.

Our 100% waterproof core, resilient vinyl and protective wear layer will keep your floor looking good for the life of your home. So naturally, all COREtec® floors come with a limited lifetime residential warranty.



Is engineered for simplicity

COREtec® is easy to install, to care for and to live with. Its secure angle tap system doesn't require any glue or nails and can be installed over existing floors without additional underlayment.

Forget about sanding, polishing, sealing or refinishing: our floors are maintenance-free.



Ocala Walnut 54-50-LVRE-2054



There's a million reasons to choose COREtec®, but here's our top 6.

Our floors:

- ✓ Are extremely stable
- ✓ Reduce noise
- ✓ Are wear resistant
- ✓ Do not need to acclimatise
- ✓ Are suitable for underfloor heating & cooling
- ✓ Install on any surface



Cork

the natural choice

All our floors have a unique attached cork underlayment. Why? It's warmer, quieter and easily installs over existing hard surfaces, perfectly concealing imperfections in subfloors. And: it's one of the most sustainable materials out there. Cork is harvested from the cork tree and can be re-harvested every decade without damaging the tree.

A natural solution that brings only benefits to your home or business:

-  Added sound insulation
-  A comfortable and warmer floor
-  A natural protection against mold and mildew
-  No need for separate underlayment
-  Absorbs subfloor imperfections



COREtec[®] floors are
that good, somebody else
can re-*enjoy* it.

At COREtec[®] Floors, we attach great importance to sustainability. Recycling our multilayer, multicomponent material has a high energy cost, which means that a circular solution with re-use of the flooring is more appropriate. That's why we come up with an environmentally friendly solution: to set up Second Life floors, based on infinite re-use, an approach which is unique in our sector.

As the architects of multilayer waterproof rigid flooring, we are the first manufacturers to set up a take-back service, giving used flooring a new lease of life. These Second Life floors will initially be offered to itable bodies and youth organisations. Our new service also has a societal dimension, as the business we call on to clean the used flooring employs people with complex barriers to work. They will use specially developed ecologically friendly COREtec[®] products to clean the dismantled flooring, making the old flooring look as good as new.

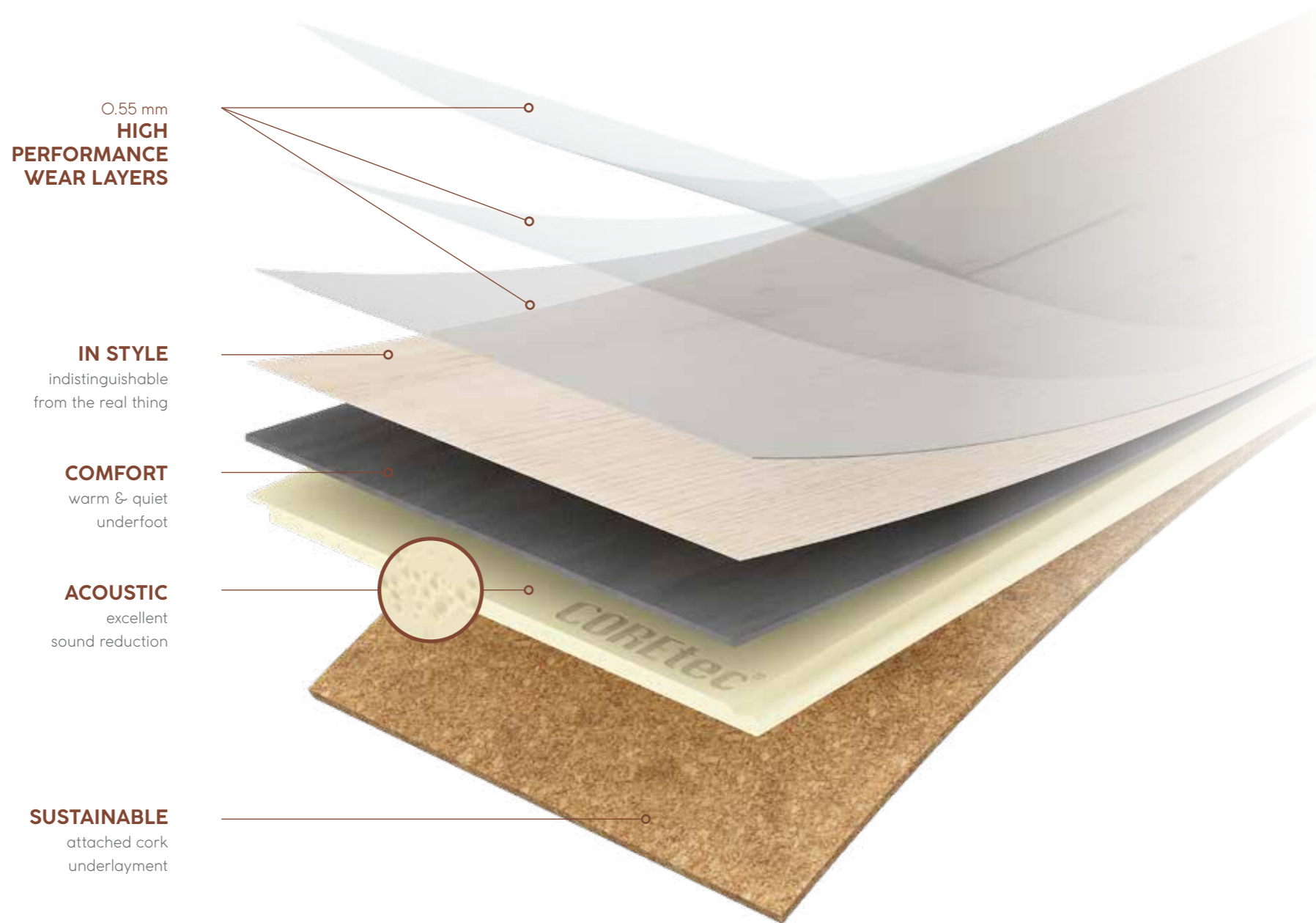
Thanks to Second Life, your old floor gets a real second chance. And therefore you also contribute to a more sustainable world!



SOUND CORE®

Silent & strong, down to the *core*

At COREtec®, we're proud to offer the most complete collection of 100% waterproof floors, so you can express what makes you, you.



100% waterproof



Extremely stable



No acclimatisation necessary



Easy to install



Installation on any surface



Reduces noise



Wear resistant



Pet proof



Electrostatic performance



Ideal for underfloor heating & cooling

The charm of *nature*

With nature as our main source of inspiration, we succeeded in creating a floor that captures the essence of your home. Whether you prefer soft earth tones or warm darker colours, our wide selection of authentic looks provides the perfect solution for every interior. Make a strong statement by relying on nature.

The new COREtec[®] Essentials collection comes with inviting designs, natural textures and a touch of class.



Baltimore Oak 66-50-LVRE-1266

has never been so *strong*



Painted Oak 99-50-LVPE-1399

the
essentials
collection

A wide range of *designs*
matching your interior



the
essentials
collection



1800 Series p.18 | **1500 Series** p.34 | **1200 Series** p.46

	8 mm	8,5 mm	8 mm	8,1 mm	8,5 mm	8 mm
--	------	--------	------	--------	--------	------

0.55 mm (EN ISO 24340)

	6 pcs 2.50 m ² 21 kg	6 pcs 1.97 m ² 18 kg	6 pcs 2.50 m ² 21 kg	6 pcs 2.50 m ² 21.33 kg	6 pcs 2.05 m ² 19.5 kg	6 pcs 1.62 m ² 15.41 kg	10 pcs 2.20 m ² 18 kg	12 pcs 2.65 m ² 23 kg
--	---------------------------------------	---------------------------------------	---------------------------------------	--	---	--	--	--

the *essentials* collection



Multi Series p.60 | **Herringbone Series** p.64 | **Tile Series** p.68

	8 mm	8 mm	8 mm
--	------	------	------

0.55 mm (EN ISO 24340)

	10 pcs 2.62 m ² 23.50 kg	12 pcs 2.50 m ² 21 kg	6 pcs 2.18 m ² 18.79 kg	8 pcs 2.23 m ² 18.69 kg	9 pcs 2.58 m ² 23.63 kg
--	---	--	--	--	--

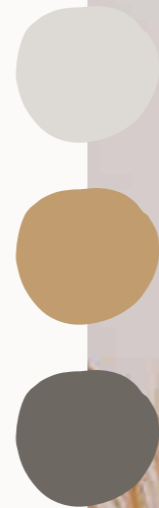
What about:

Has bevels on the long sides of the plank.

Has bevels on the long & short sides of the plank.

The embossing follows the structure of the wood for a real-life touch.

The m of *nature* has never been so *strong*



1800
SERIES

- 1830 x 228 x 8,1 mm
- 1830 x 228 x 8 mm
- 1830 x 180 x 8,5 mm

Minnesota Ash O3 - 50-LVPE-2103



FREMONT OAK 82

50-LVRE-2282
1830 x 228 x 8 mm



FREMONT OAK 93

50-LVRE-2293
1830 x 228 x 8 mm





MUNSTER OAK 88

50-LVRE-2388
1830 x 228 x 8 mm



MUNSTER OAK 53

50-LVRE-2353
1830 x 228 x 8 mm





GREYSTONE CONTEMPO OAK 34

50-LVRE-634
1830 x 180 x 8,5 mm



TIMBERLAND RUSTIC PINE 41

50-LVRE-641
1830 x 180 x 8,5 mm





BALTIMORE
OAK 95
50-LVRE-1295
1830 x 180 x 8,5 mm



BALTIMORE
OAK 77
50-LVRE-1277
1830 x 180 x 8,5 mm



BALTIMORE
OAK 66
50-LVRE-1266
1830 x 180 x 8,5 mm



BALTIMORE
OAK 84
50-LVRE-1284
1830 x 180 x 8,5 mm





MINNESOTA ASH O3

50-LVPE-2103
1830 x 228 x 8 mm



DOBRA OAK 51

50-LVPE-951
1830 x 228 x 8 mm



TASMAN OAK 50

50-LVPE-950
1830 x 228 x 8 mm





WARWICK OAK 53
50-LVPE-953
1830 x 228 x 8 mm



ELLIS OAK 54
50-LVPE-954
1830 x 228 x 8 mm



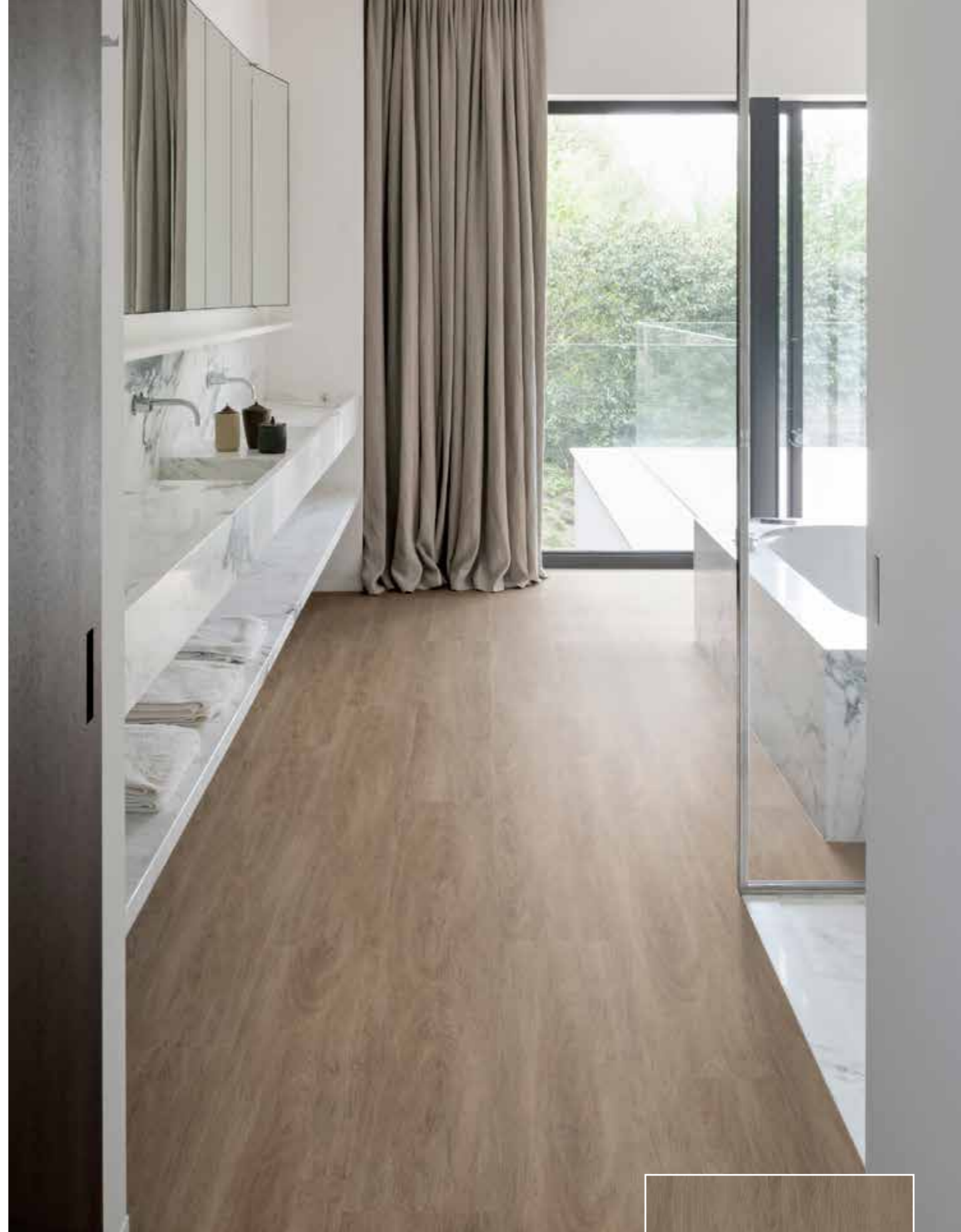
UNITY OAK 57
50-LVPE-957
1830 x 228 x 8 mm





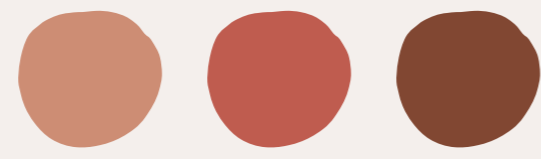
ALEXANDRIA OAK 14

50-LVP-614
1830 x 228 x 8,1 mm



HIGHLANDS OAK 15

50-LVP-615
1830 x 228 x 8,1 mm



The m of *nature* has never been so *strong*

1500
SERIES

1500 x 228 x 8,5 mm
1500 x 180 x 8,5 mm



OCALA WALNUT 54

50-LVRE-2054
1500 x 228 x 8,5 mm



OCALA WALNUT 87

50-LVRE-2087
1500 x 228 x 8,5 mm



OCALA WALNUT 68

50-LVRE-2068
1500 x 228 x 8,5 mm





JASPER OAK 01
 50-LVR-9601
 1500 x 180 x 8,5 mm



CLEVELAND OAK 52
 50-LVRE-1452
 1500 x 228 x 8,5 mm



CLEVELAND OAK 86
 50-LVRE-1486
 1500 x 228 x 8,5 mm





BOSTON OAK O3
50-LVR-1903
1500 x 180 x 8,5 mm



BOSTON OAK 92
50-LVRE-1992
1500 x 228 x 8,5 mm



BOSTON OAK 78
50-LVR-1978
1500 x 180 x 8,5 mm





GREAT NORTHERN
OAK O5
50-LVR-9605
1500 x 180 x 8,5 mm



WATERTON LAKES
OAK O4
50-LVR-9604
1500 x 180 x 8,5 mm



PORTLAND OAK 72
50-LVR-1872
1500 x 180 x 8,5 mm





WIND RIVER OAK O6

50-LVR-8606

1500 x 180 x 8,5 mm



SPARWOOD OAK O6

50-LVR-9606

1500 x 180 x 8,5 mm



The m of *nature* has never been so *strong*



1200
SERIES
1220 x 180 x 8 mm
1220 x 182 x 8 mm



ENCHANTED OAK 51

50-LVPE-751
1220 x 180 x 8 mm



RUSTLED OAK 50

50-LVPE-750
1220 x 180 x 8 mm





PAINTED OAK O2

50-LVPE-1302
1220 x 180 x 8 mm



PAINTED OAK 99

50-LVPE-1399
1220 x 180 x 8 mm





CLEVELAND OAK 62

50-LVPE-1462
1220 x 180 x 8 mm



CLEVELAND OAK 94

50-LVPE-1494
1220 x 180 x 8 mm





CHARLESTON OAK 53
 50-LVP-1153
 1220 x 182 x 8 mm



CHARLESTON OAK 72
 50-LVP-1172
 1220 x 182 x 8 mm



CHARLESTON OAK 78
 50-LVP-1178
 1220 x 182 x 8 mm

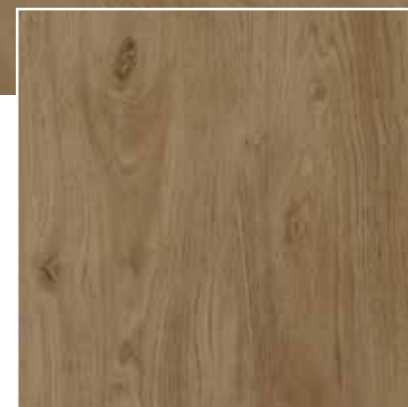


BLACKSTONE
OAK 07
50-LVP-707
1220 x 182 x 8 mm

MULTICOLOUR EFFECT



FALLEN OAK 52
50-LVP-752
1220 x 180 x 8 mm



BALTIMORE OAK 54
50-LVP-1254
1220 x 182 x 8 mm



NANTUCKET OAK 11
50-LVP-211
1220 x 182 x 8 mm



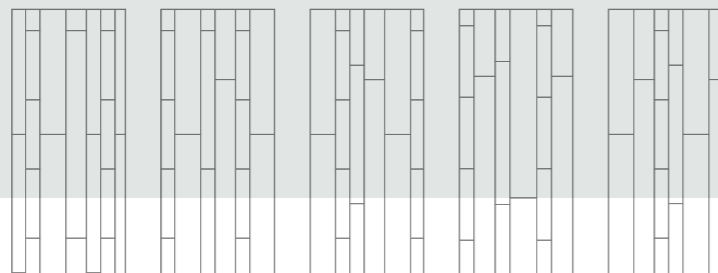
IVORY COAST OAK 05
50-LVP-705
1220 x 182 x 8 mm



The m of *nature* has never been so *strong*



Create
your own style



MULTI SERIES

1 box contains planks in following dimensions:
1830 x 228 x 8 mm 1220 x 126 x 8 mm
1830 x 181 x 8 mm 610 x 126 x 8 mm

Texas Oak M54-50-LVREM-2454



TEXAS OAK M54

50-LVREM-2454

610 x 126 x 8 mm
1220 x 126 x 8 mm

1830 x 181 x 8 mm
1830 x 228 x 8 mm



TEXAS OAK M71

50-LVREM-2471

610 x 126 x 8 mm
1830 x 181 x 8 mm
1220 x 126 x 8 mm
1830 x 228 x 8 mm



TEXAS OAK M86

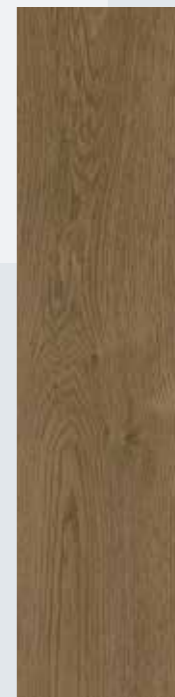
50-LVREM-2486

610 x 126 x 8 mm
1830 x 181 x 8 mm
1220 x 126 x 8 mm
1830 x 228 x 8 mm

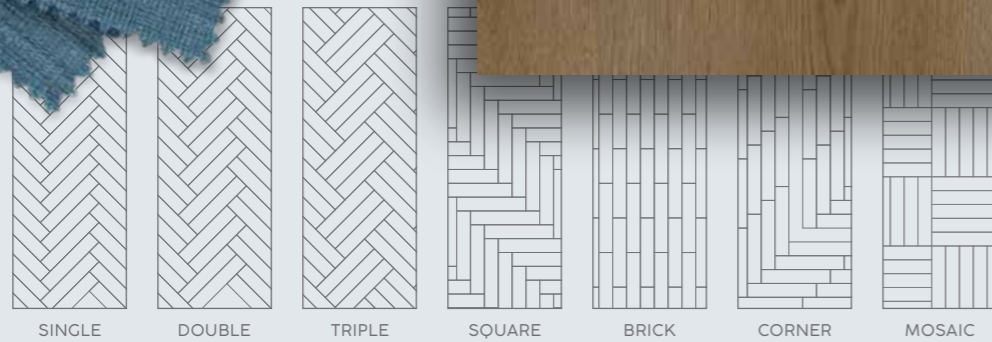




The m of *nature* has never been so *strong*



Mix & match
your own style



HERRINGBONE SERIES

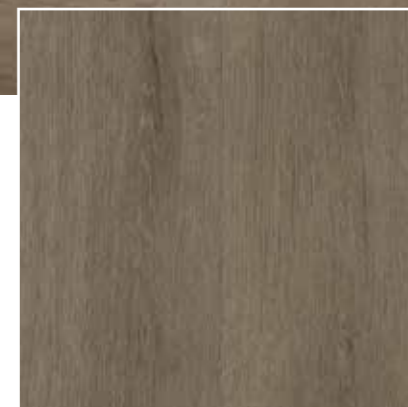
912 x 228 x 8 mm



TEXAS OAK H71
 50-LVRH-2471
 912 x 228 x 8 mm



TEXAS OAK H54
 50-LVRH-2454
 912 x 228 x 8 mm

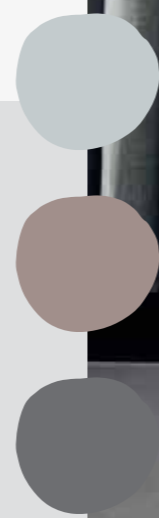


TEXAS OAK H86
 50-LVRH-2486
 912 x 228 x 8 mm





The m of *nature* has never been so *strong*

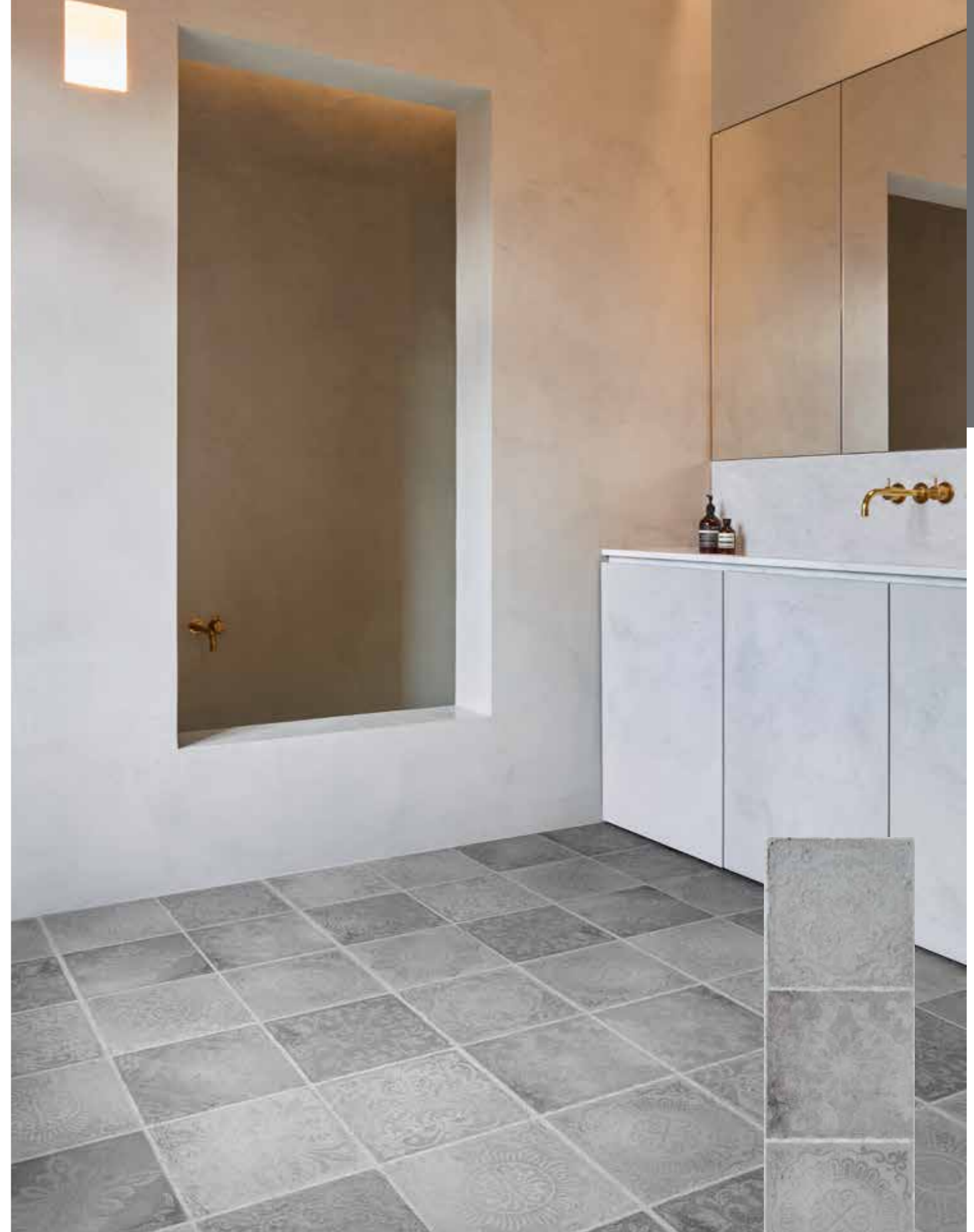


TILE
SERIES

610 x 457 x 8 mm
610 x 470 x 8 mm
1205 x 302 x 8 mm



RABAT 90
50-LVT-1790
1205 x 302 x 8 mm



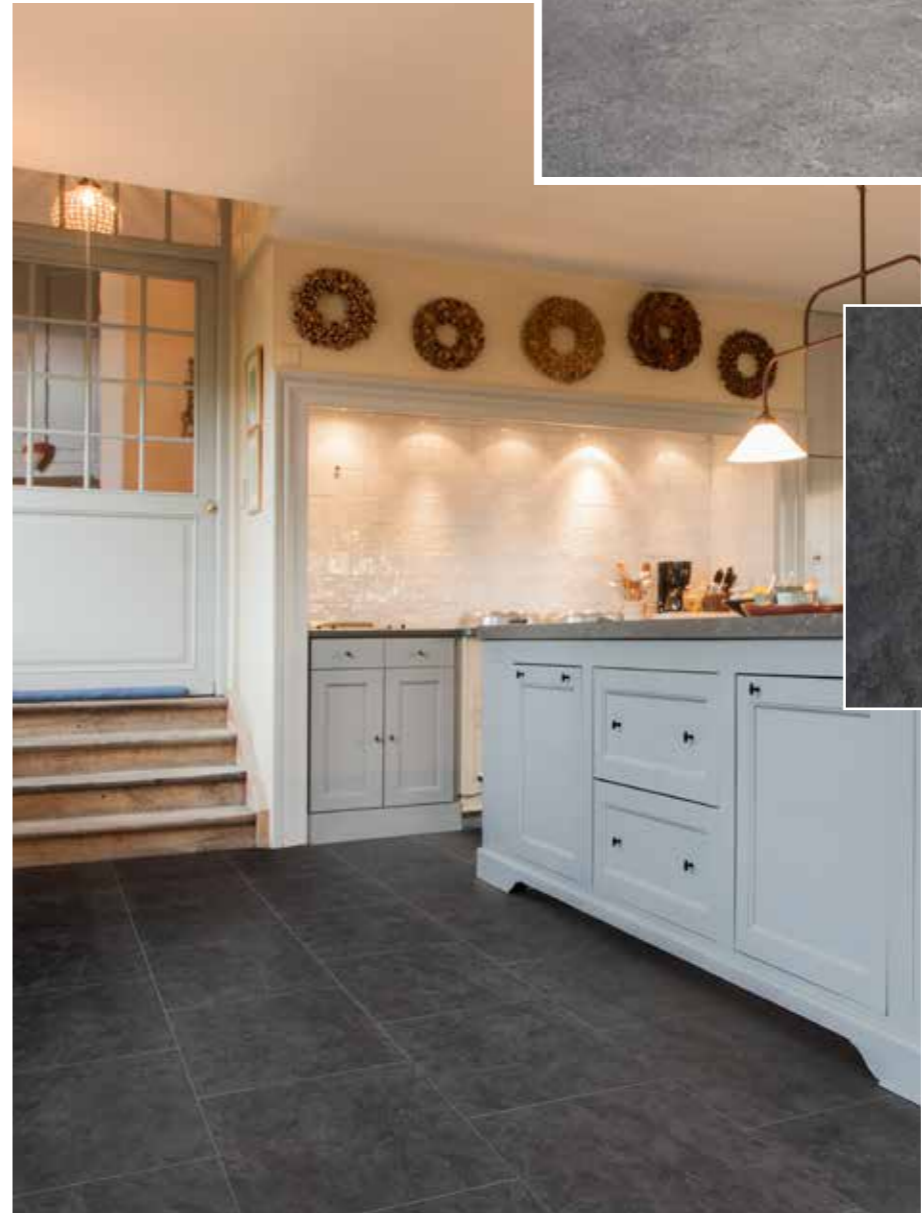
RABAT 94
50-LVT-1794
1205 x 302 x 8 mm



LYRA 57
50-LVTE-1857
610 x 457 x 8 mm



AQUILA 50
50-LVTE-1850
610 x 457 x 8 mm



MENSA 58
50-LVTE-1858
610 x 457 x 8 mm





COLUMBA 53

50-LVTE-1853

610 x 457 x 8 mm



VELA 54

50-LVTE-1854

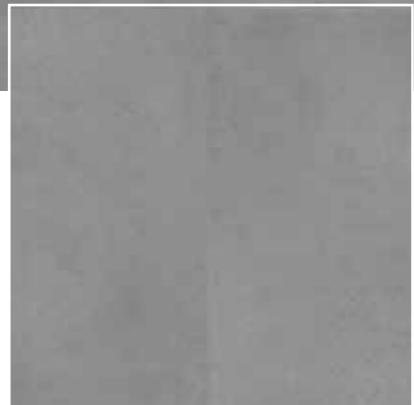
610 x 457 x 8 mm



COSMIC COPPER 67

50-LVT-1567

610 x 470 x 8 mm



POLISHED CONCRETE 95

50-LVT-1695
610 x 470 x 8 mm



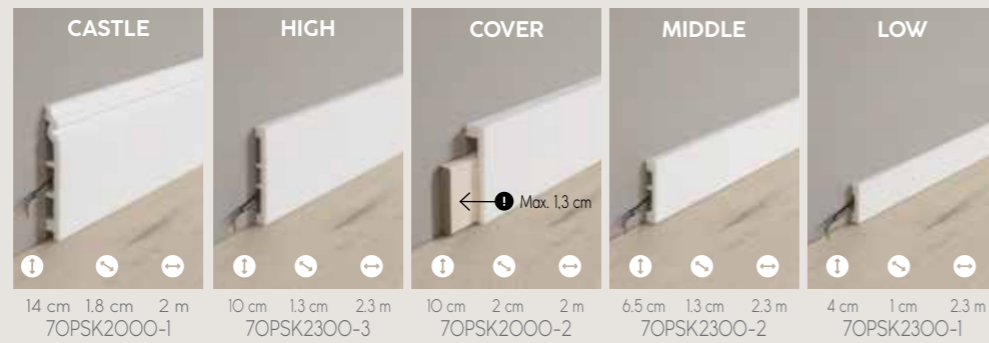
WEATHERED CONCRETE 03

50-LVT-1803
610 x 470 x 8 mm

Accessories

Paintable skirtings

Our paintable skirtings are 100% waterproof & shock resistant.

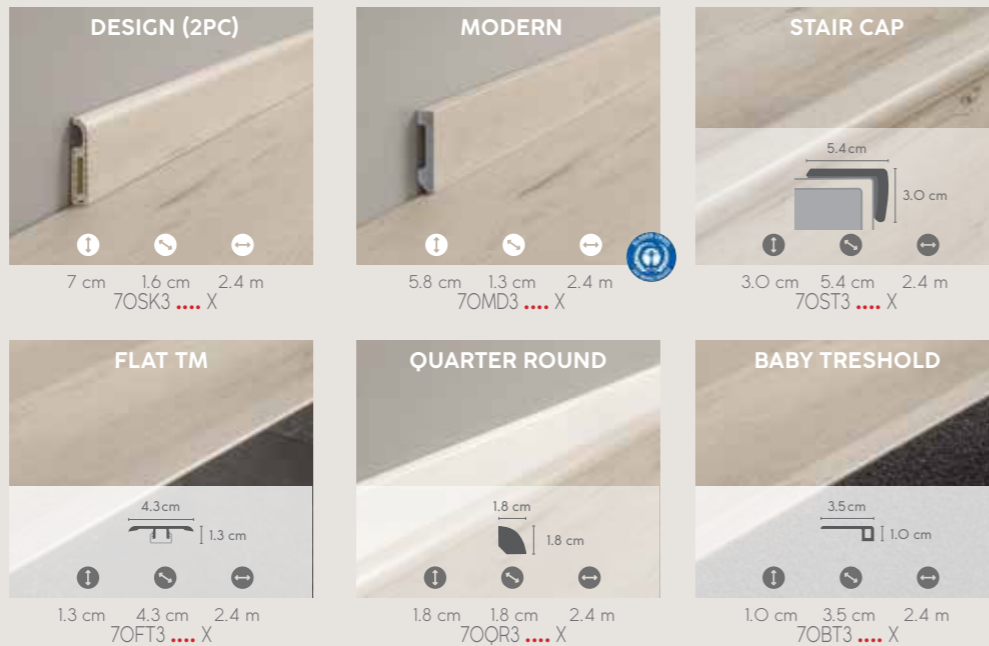


Matching design accessories

Our design accessories match the design of your floor & are also 100% waterproof & shock resistant.



! = Matching design reference

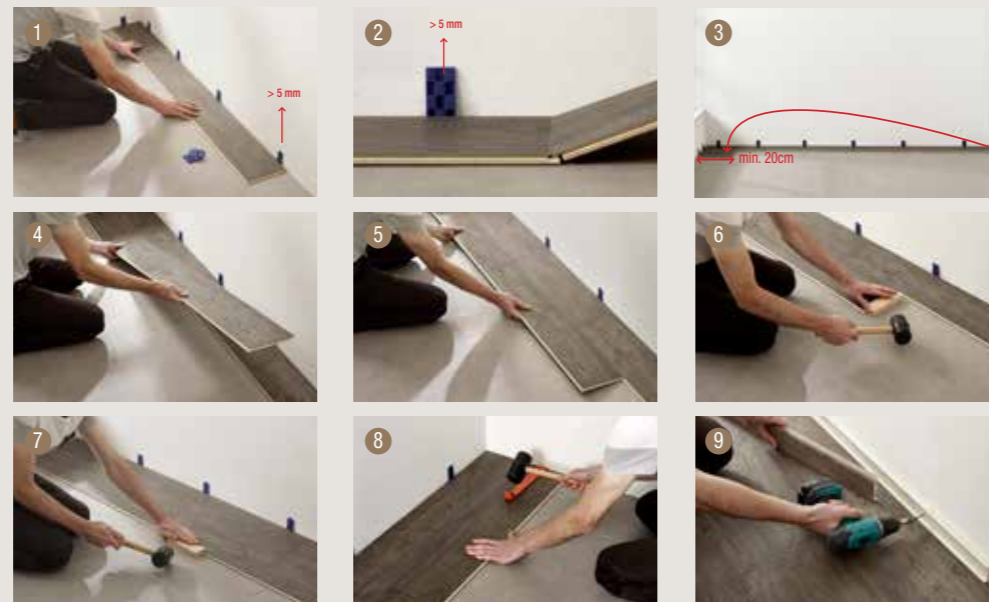


Installation

Easy to install

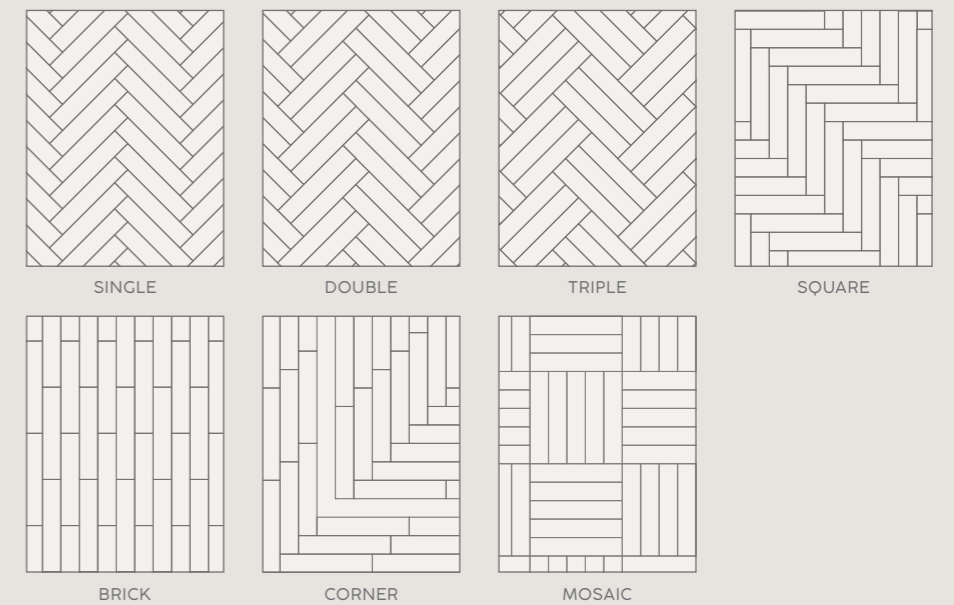
COREtec® floors have the easiest install on the market.

Follow the steps or watch our installation video on our website. www.coretecfloors.com



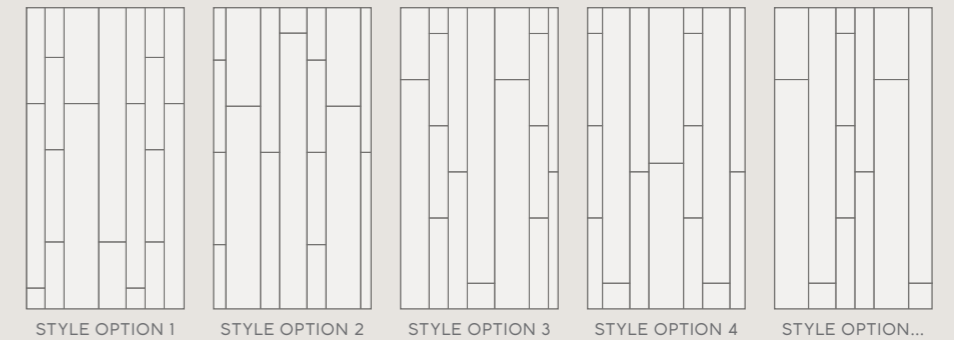
Herringbone Series variations

Mix & match your own style with the extra-large herringbone planks.



Multi Series variations

Create your own style with four different plank sizes. The layout you choose is completely up to you!



Maintenance

The COREtec® Clean, quick & green kit:

- Daily cleaner
- Deep cleaner
- Stain remover

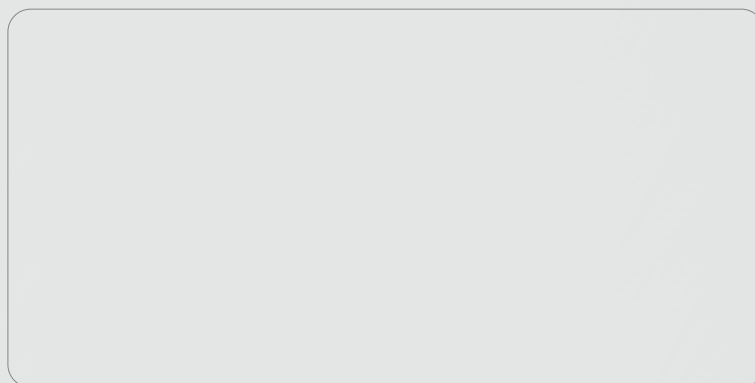




COREtec®, the natural choice



Warranty (Years) The warranty covers manufacturing defects and premature wear in the event of normal use.



Souverainestraat 27 - 9770 Kruisem (Belgium)
info@usfloors.be · www.coretecfloors.com